

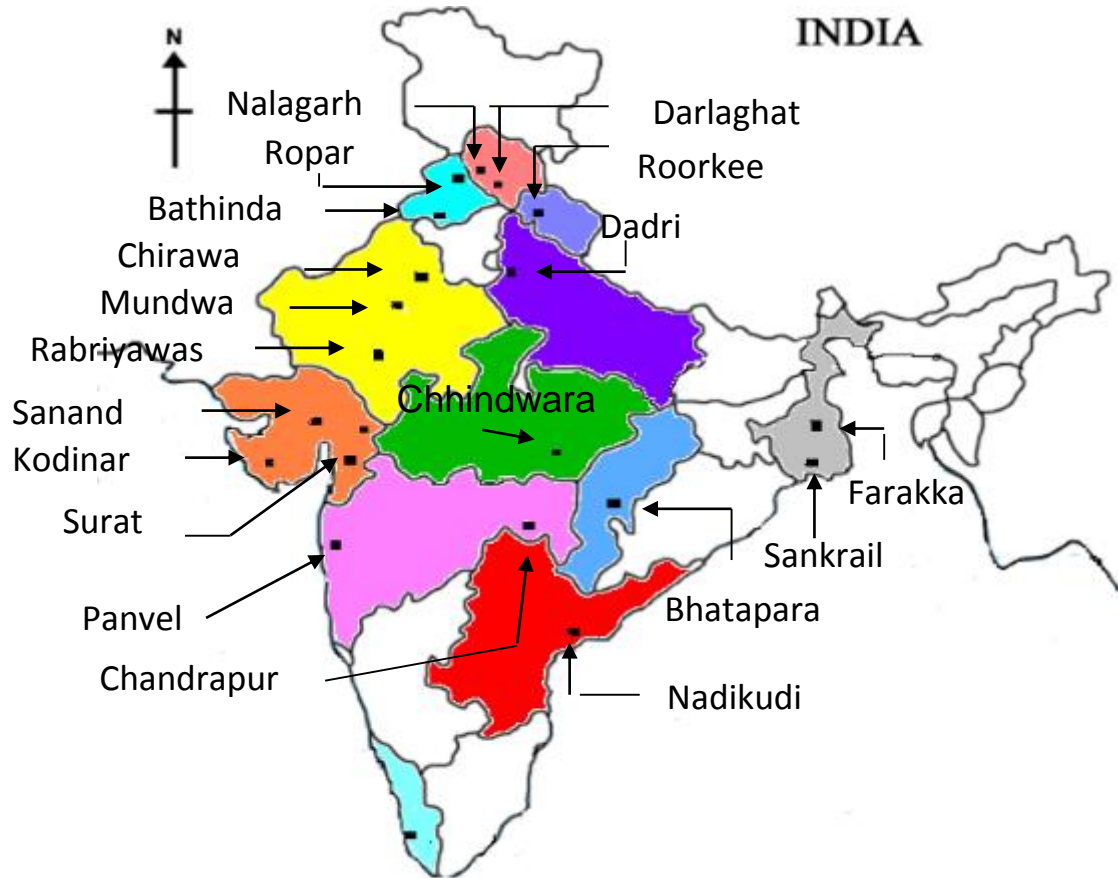


**Ambuja
Cement
FOUNDATION**

Water Resource Management

Public Participation experience in Water Saving and Conservation

ACF Our outreach



Vision

To build a sustainable, prosperous society, built on long terms partnerships.

Mission

Energise, involve and enable communities to realise their full potential

11 states

21 Locations

952 Villages

19.8 lakh people

ACF MODEL

ENERGISE

**COMMUNITY
ENGAGEMENT &
PRIORITISATION OF
ISSUES**

Rapport building

**Entry point
activities**

**IDENTIFY
PARTICIPATORY
SOLUTIONS**

**Listen to
traditional wisdom**

**Understand
issues and
probable solutions**

**INSTITUTION
BUILDING &
IMPLEMENTATION**

**Promote
appropriate
institutions**

**Building
capacity**

**Implement pilots
learning**

SCALING UP

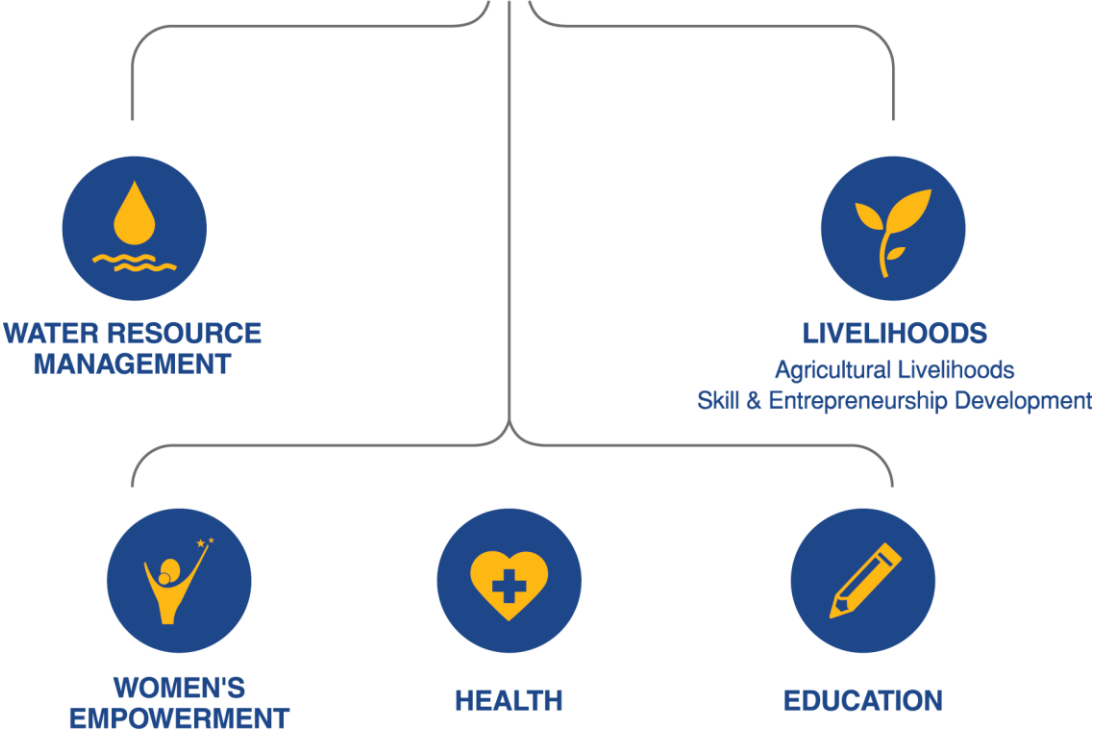
**Replicate
successful
solutions for
scaling up**

ENABLE

**SUSTAINABILITY
& SUPPORT**

**Strengthening
institutions
for long term
sustainability**

Ambuja Cement FOUNDATION





WATER RESOURCE MANAGEMENT

We create 'drought-resilient' rural villages and ensure all-year-round water for farmers, families and communities

Our Focus Areas:

1. **Water Harvesting** (Check dam, Pond, Khadin, dykes)
2. **Drinking Water** (RRWHS, Hand pump, Wells, Filtration systems)
3. **Water Use Efficiency** (Micro irrigation, Soil moisture conservation, awareness)

Water Initiatives

Water Interventions	Unit	Achieved
Pond Renovation	Nos.	645
RRWHS	Nos.	6751
Water Distribution scheme	Nos.	309
Hand pumps	Nos.	129
Well/bore wells	Nos.	647
RO system	Nos.	15
Check Dams	Nos.	408
Khadin/Waste weir	Nos.	55
Farm Pond	Nos.	1426
Interlinking Canal (Km)	KM	71.76
Percolation Well	Nos.	1377
Soil & Water Conservation	Ha	24902
Micro Irrigation	Acre	12525
SRI	Acre	6708



Community Participation



Stages	Benefits of Community Involvement
Project conceptualisation	At this stage community involve in need assessment, site identification and finalisation modalities for implementation. People's participation is ensured through village/group meetings, household contacts and conducting Social Engaged Scorecard (SES).
Implementation	During this stage community involve in supervision, financial contribution, provide labour, equipment's. Community members resolve conflicts.
operation and post maintenance	People decide themselves distribution, Norms for Repair & maintenance, sustainability of assets created

The efficiency and/or cost-effectiveness, equity in distribution of benefits, sustainability and empowerment of the people is achieved through community participation.

Our Impact of Water Program



Water Storage Capacity Created



Check dams Constructed



Area under micro irrigation



Rooftop Rainwater Harvesting Structures



Increase in Groundwater Level



SROI on every INR Invested in Watershed Development at Daseran, Darlaghat

What areas of cooperation can be extended to NWM in achieving any of the goal/s



- Collaborative project in the area of community based water resource management
- Capacity building of PRI/WUAs

What pilot /demonstration projects can be taken up



- PIM at medium irrigation projects (Chandrapur)
- Revival of traditional water bodies
- Improving irrigation efficiency through community engagement (Micro irrigation, SRI)



Thanks