

Strengthening Capacities Through Research, Training and Knowledge Management on Evidence-based adaptation planning & implementation

Lessons from Indo-German Technical Cooperation

Kirtiman Awasthi

Senior Policy Advisor- CCA & Climate Finance

Climate Change Adaptation in Rural Areas of India (CCA-RAI)
Environment, Climate Change & NRM
GIZ India



Ministry of Environment, Forest and Climate Change
Government of India



One World
One Sun
One Grid

INDIA
@ COP24 KATOWICE 2018



“The delayed onset of the South-West Monsoon reduced my option of rain fed farming and high intensity rainfall during South-West and North-East monsoon heavily, eroded our farm top soil, leaving us at the mercy of nature, resulting in decreased food and income and an increase in migration in our village”

**P. Chinnapaiyan, 65
Tiruvannamalai, Tamil Nadu**

Overall Narrative

Climate change has long-lasting impact on natural resources, economic activities, food security, water, health, physical infrastructure and society in general

Mainstream development policies and programmes targets the well being of all these sectors

However, short and long terms climate change impacts need to be accounted for in policies and plans → negative impact on expected goals/targets

Traditional development projects are based on historical backlog and socio-political considerations

Introducing climate change concerns in policy, planning and implementation

- *secures developmental goals*
- *needs new capacities, knowledge, finance and technology*



Climate Policy Framework in India

International Level

National Level

Sub-National (State) Level

NDCs

1. Adaptation to climate change
2. Low carbon growth path

National Action Plan on Climate Change (NAPCC)

8 National Mission

State Action Plan on Climate Change (SAPCC)

National / International Financing Instruments

CC Integrated planning ?

District Development Plans/ Village Development Plans

Local/ Community level assessment of vulnerability climate change

Integration with ongoing development schemes/ initiatives having adaptation potential

4X4 Assessment of the **Impacts of climate change in 2030s** on key sectors of the economy

Indo-German Technical Cooperation/ multi-lateral/ bilateral cooperation

Enabling conditions for mainstreaming

Generating **evidence** on vulnerability, climate risk

Mainstreaming & demonstration
through local **development plans**

Climate **Finance**

**Capacity
Development**

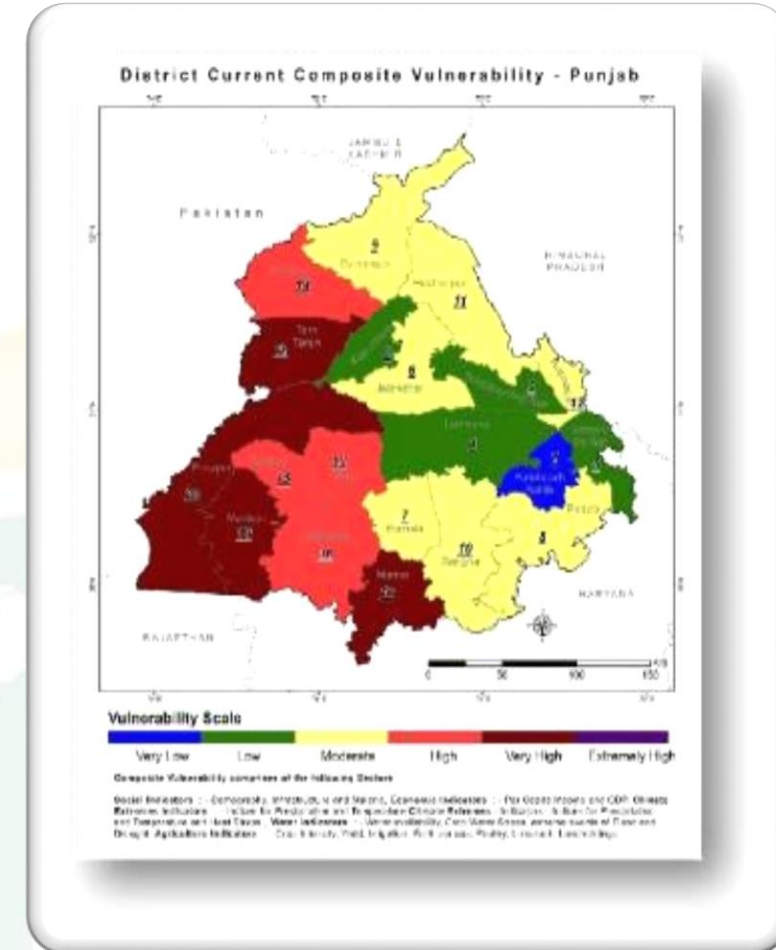
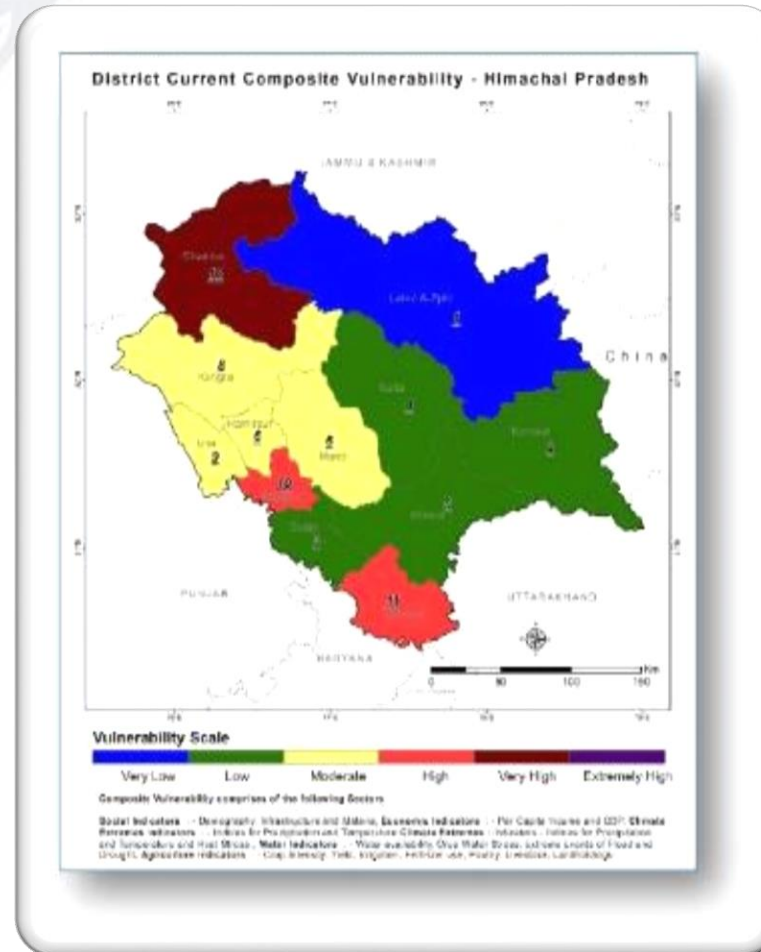
Technology

Multi-Stakeholder
Dialogues

Strengthening Knowledge Base on Climate Change

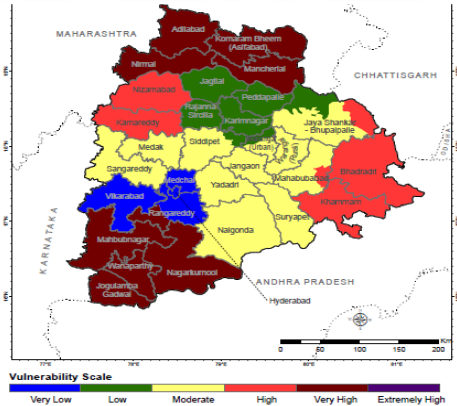
Strengthening knowledge base on impact of climate change on water resource to support evidence based adaptation planning process (At district and sub-district levels).

- Vulnerability and risk on water resources due to climate change
- Prioritizing adaptation options
- Identifying technology needs



Mainstreaming & Demonstration

Screening



- Define boundaries
- Past & current climate change trends
- Sectoral vulnerability and affected district
- Potential schemes and programmes for convergence

Detailed Analysis



- Community-level data
- Scientific data
- Combine data sets to analyse climate risks, existing coping mechanism, potential adaptation options,
- Relevance to existing schemes/policies

Identification of adaptation actions



- Technical & Financial feasibility
- Urgency of CC vulnerability
- Convergence with existing programmes / schemes
- Direct/indirect beneficiaries being impacted

Demonstration and integration in local plan



- Additional resources and technical skills?
- Mobilization from existing schemes?
- Aligning options with existing scheme/plan?
- Modifying original planning to integrate adaptation option?

Stakeholder Consultation

CCA Demonstration project

Enabling farmers' collective action for managing climate risks through climate resilient practices for natural resources

Climatic Stress

- Frequent drought
- Erratic rainfall
- Increase in temperature

Locale

- 9 Micro-watershed in Krishna River Basin

Interventions

- Watershed management
- Drip irrigation
- Drought resistant varieties
- Strengthening of Farmers Producer Organisations

Target group

- 13,000 Farmers (6500 woman beneficiary)

Convergence

- NABARD grant for soil and water conservation measures of two micro watersheds

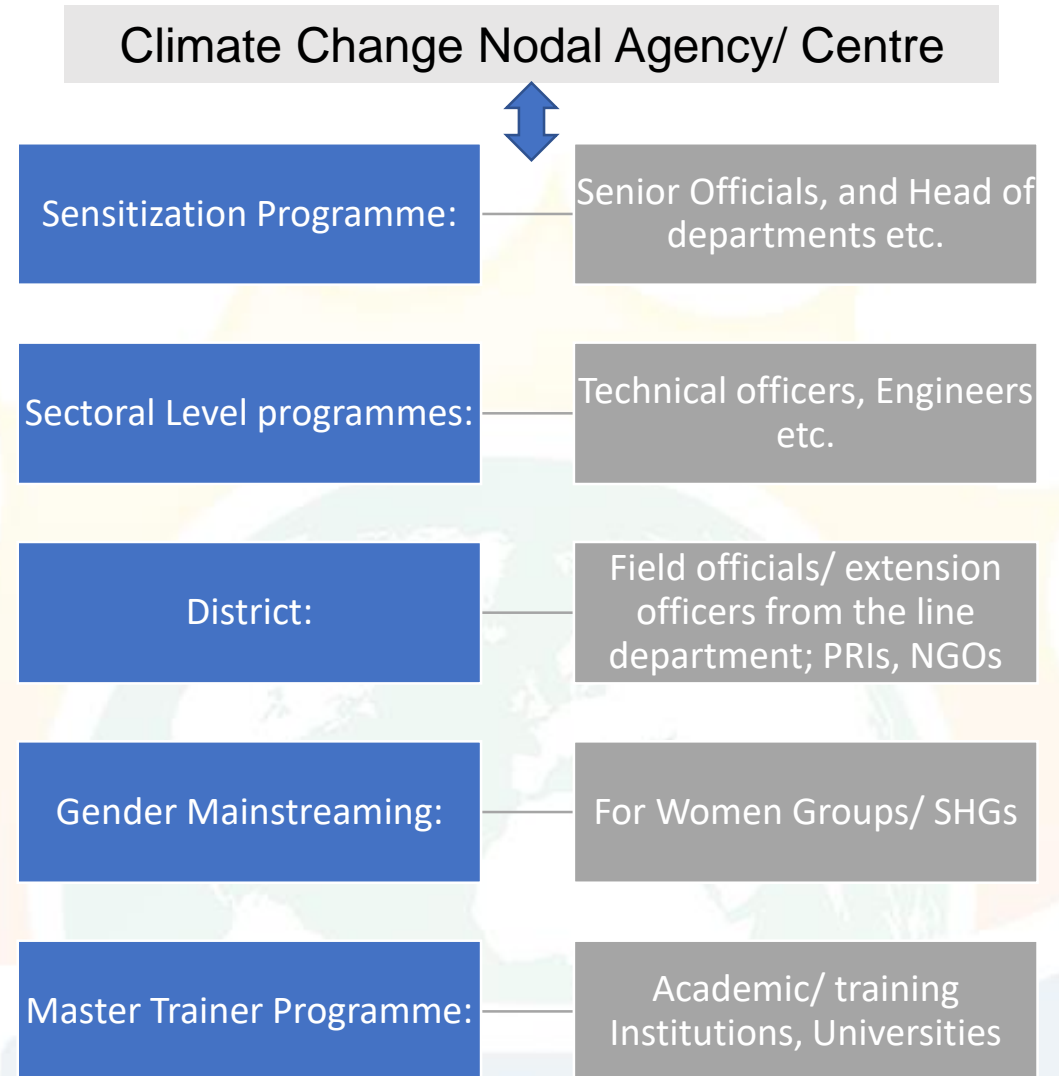


Location of micro watersheds in Krishna River Basin, Telangana

Capacity Development

- Mainstreaming CCA development planning
- Implementation of SAPCC: need for capacity building
- Integrating CCA into planning needs systemic thinking and collaborative efforts from all allied stakeholders

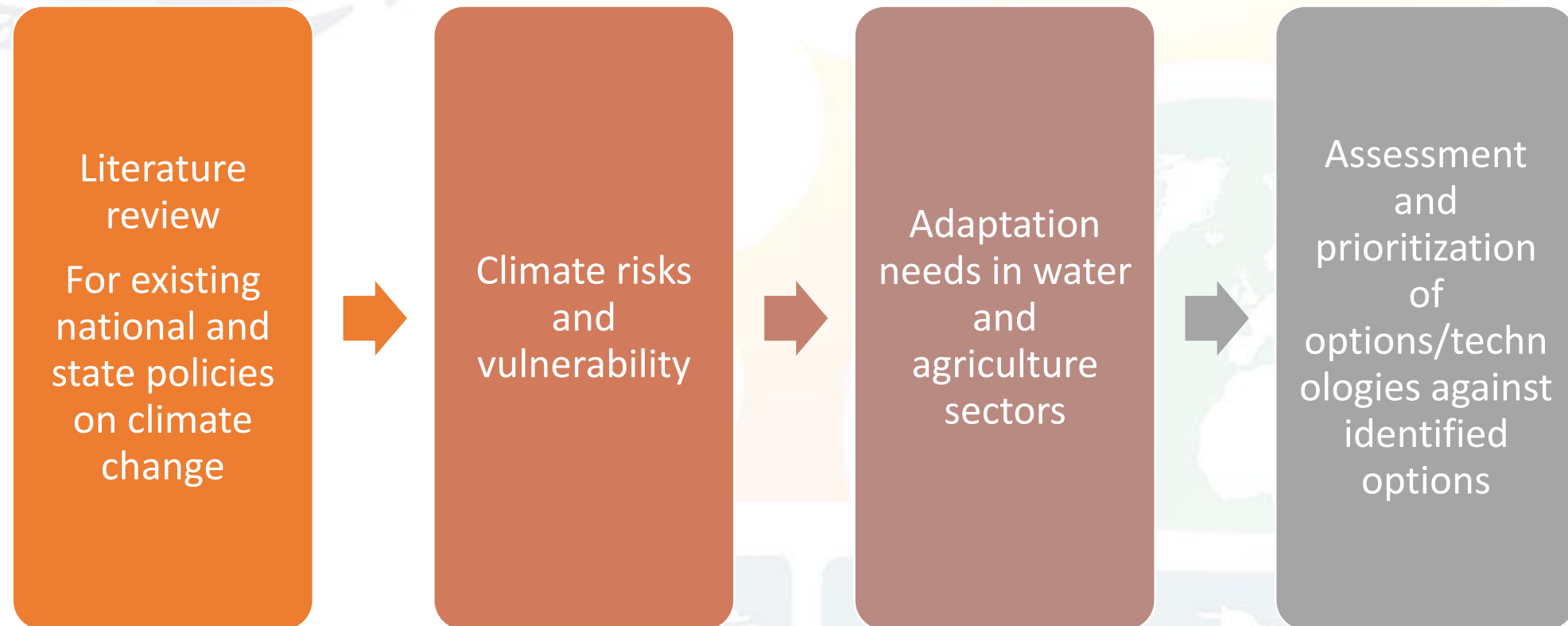
The training of government officials and adaptation practitioners at multiple levels enhances their capacities to plan, implement, finance, and monitor adaptation





Technology Needs Assessment (TNA)

- Prioritize technologies and practices to address climate change adaptation with mitigation as co-benefit
- Promotes resilience and sustainable development



What it means for CCA interventions?





Thank you



Environment, Climate Change and Natural Resource Management

GIZ

A2/18, Safdarjung Enclave
New Delhi